



TAGHeuer

SWISS AVANT-GARDE SINCE 1860

2010 Gimmick Rally



TAGHeuer
SWISS AVANT-GARDE SINCE 1860

Jeopardy!

St. Charles 10

Since his retirement, Colonel
Baker can be found doing the
same thing every day

What is Sitting on a Bench





TAGHeuer
SWISS AVANT-GARDE SINCE 1860

Jeopardy !

St. Charles 20

Where does a foxy kind of guy
go for a grooming?

What is the Fox Grooming Den?





TAGHeuer
SWISS AVANT-GARDE SINCE 1860

Jeopardy!

St. Charles 30

Redheads with attitude find
all the deals here!

What is The Sassy Fox?





TAGHeuer
SWISS AVANT-GARDE SINCE 1860

Jeopardy!

St. Charles 40

South of the Border, ladies
swoon while musicians croon.

Where is the Jalapeno Grill.





TAGHeuer
SWISS AVANT-GARDE SINCE 1860

Jeopardy!

St. Charles 50

The rally route crosses the Fox
River how many times?

What is 6 times.



#1 – St. Charles, Route 34

2 – St. Charles, Prairie St.



3 - Geneva, Route 38,
Lincoln Highway



4 - Geneva, Route 38,
Lincoln Highway



5 - Batavia, Route 25



6 - Geneva, Route 38,
Lincoln Highway



TAGHeuer
SWISS AVANT-GARDE SINCE 1860

Jeopardy!

Barns and Farms 10

Jennifer is celebrating
something in a big way.

What is her birthday!





TAGHeuer
SWISS AVANT-GARDE SINCE 1860

Jeopardy!

Barns and Farms 20

1843 was a very good year
for what farm?

What is the Weber Farm.





TAGHeuer
SWISS AVANT-GARDE SINCE 1860

Jeopardy!

Barns and Farms 30

Who would ever put a
Porsche tractor up there!

What is on a silo at Kuipers Farm.





TAGHeuer
SWISS AVANT-GARDE SINCE 1860

Jeopardy!

Barns and Farms 40

The midwest boasts a lot of livestock,
but sadly not the pink 917/20
“Truffle-Hunter from Zuffenhausen”.
Where is the “Kane County” version
found?

Where is Kane County Landscape Materials and Supplies.





TAGHeuer
SWISS AVANT-GARDE SINCE 1860

Jeopardy!

Barns and Farms 50

Build it and they will come.
What is in this field that you
could use for a picnic?

What is a picnic table (Keslinger Road).





TAGHeuer
SWISS AVANT-GARDE SINCE 1860

Jeopardy!

Huskies 10

Who welcomes you to
Husky Country?

Who is DeKalb.





TAGHeuer
SWISS AVANT-GARDE SINCE 1860

Jeopardy!

Huskies 20

Where does this Husky
make deposits
(and withdrawals)?

What is Castle Bank.





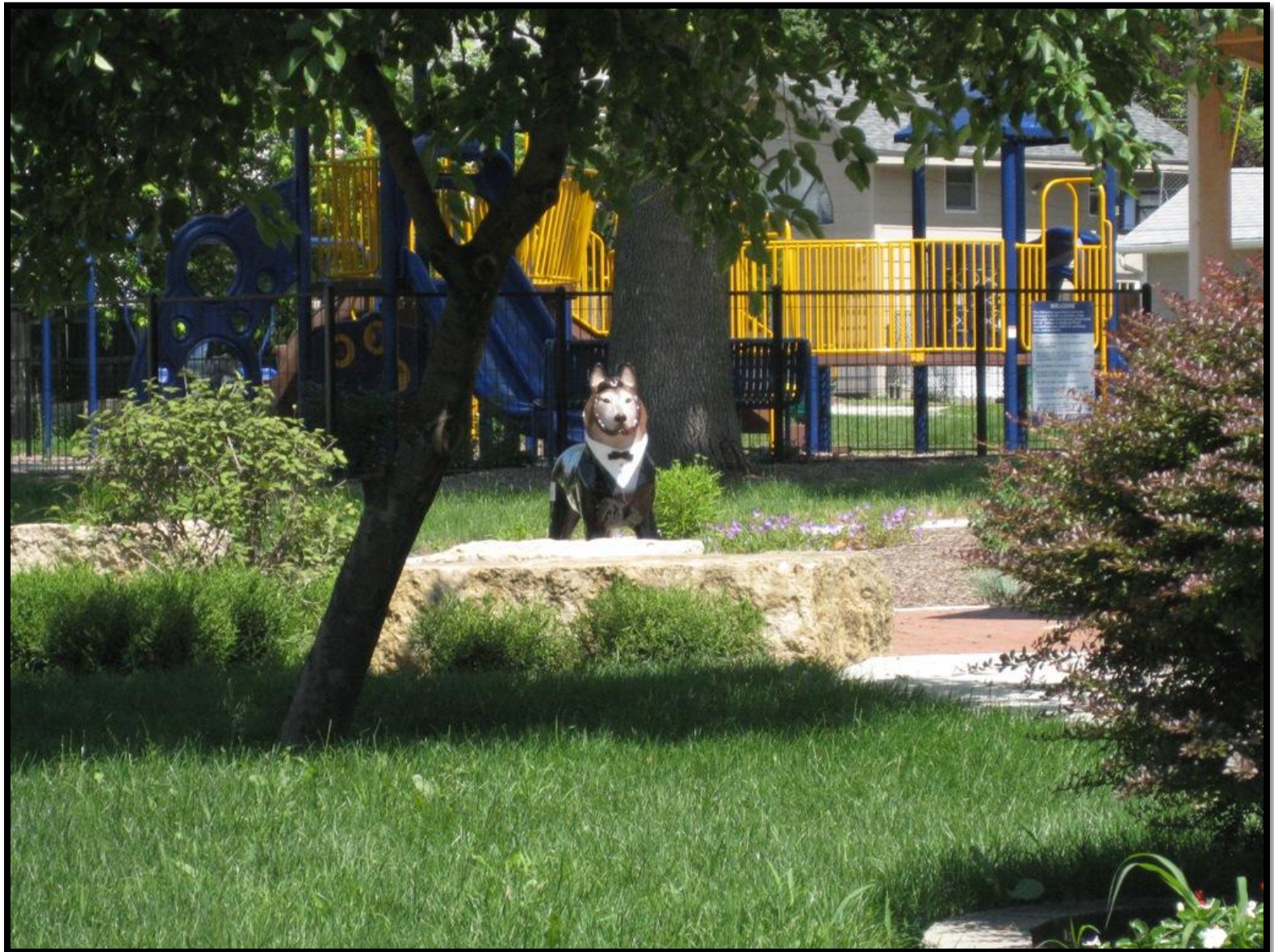
TAGHeuer
SWISS AVANT-GARDE SINCE 1860

Jeopardy!

Huskies 30

Tuxedo Husky represents a
significant person, who is
this important man?

Who is Abe Lincoln.





TAGHeuer
SWISS AVANT-GARDE SINCE 1860

Jeopardy!

Huskies 40

World Traveler Husky
prepares his itinerary here.

What is Copy Service.





TAGHeuer
SWISS AVANT-GARDE SINCE 1860

Jeopardy!

Huskies 50

This Husky is slightly off the
beaten path, his camera
ready, waiting for action, in
front of what building?

What is Still Hall.





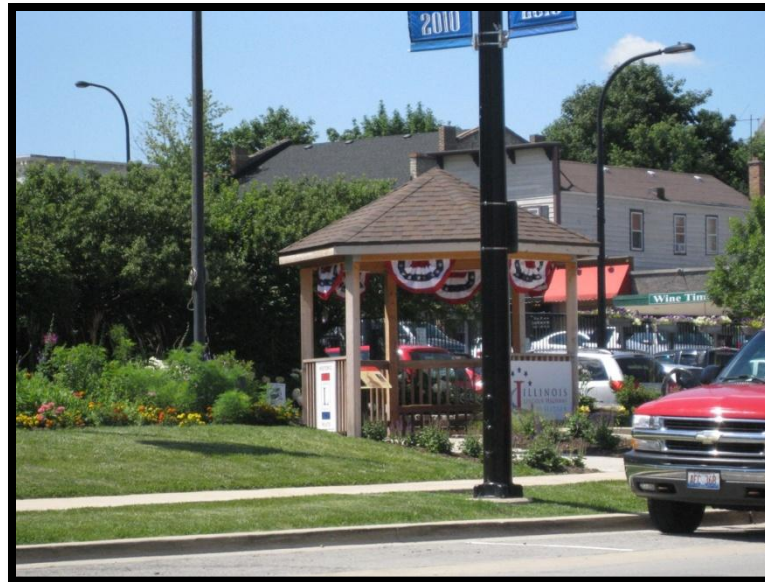
TAGHeuer
SWISS AVANT-GARDE SINCE 1860

Jeopardy!

Lincoln Highway 10

How many Lincoln Highway
Historical Gazebos do you
see on this rally?

What are 3 Gazebos.





TAGHeuer
SWISS AVANT-GARDE SINCE 1860

Jeopardy!

Lincoln Highway 20

Mud season came early and
often in Illinois.

What was used in 1914 to build
the Lincoln Highway?

What is concrete.

Illinois Lincoln Highway

Mobilizing the Country Changed Society

Illinois, in the heart of the nation, has always been a crossroads state. The country's great transportation arteries – the Great Lakes, the Mississippi and Ohio Rivers, the railroads, the interstate highway system – all intersect through Illinois. Therefore, it was fitting that the state should be at the forefront of the development of this transcontinental highway – the Lincoln Highway.

The sticky prairie soil of the Midwest, often referred to as "gumbo", was the perfect material to demonstrate the contrast between concrete and mud. The first seedling miles served to convince the public to accept the concept that long-distance roads should be built not only for local convenience, but for the benefit of everyone; roads for the nation, not just the community.



Image "Traveling Down the Lincoln Highway"
Lincoln Highway Digital Image Collection, Special Collections Library, University of Michigan Ann Arbor

With a growing network of paved roads, the country was rapidly mobilizing. By 1927, a majority of families owned an automobile. Short, casual visits replaced all-day travel, with farmers and villagers discovering how easy it was to dash off to town for shopping or entertainment, even high school sports became major social events for the community.



Image taken from the NATIONAL GEOGRAPHIC magazine, August 1926

Farmers profited from those early travelers quagmired in wet stretches of road. "Speeders" traveling 35 mph on concrete sections only to be driven deep into the mud when the pavement ran out were particular favorites!



TAGHeuer
SWISS AVANT-GARDE SINCE 1860

Jeopardy!

Lincoln Highway 30

A mural depicting the
construction of the First
Seedling Mile is found in what
town?

Where is Cortland.





TAGHeuer
SWISS AVANT-GARDE SINCE 1860

Jeopardy!

Lincoln Highway 40

What are the dimensions of
the First Seedling Mile?

Illinois Lincoln Highway

The First Seedling Mile in the Country

Work commenced in September of 1914 on the "First Seedling Mile" in Malta, Illinois. This construction was key to the Lincoln Highway, which runs from Times Square in New York City, to Lincoln Park in San Francisco.

Planned in 1913 by the Lincoln Highway Association, this roadway predated the Federal Highway System and later came under the jurisdiction of the State Highway Commissions along the route. The project was completed 14 months after it began.

The road was only 10 feet wide at the time and was paved with concrete in October 1914. The Malta "Seedling Mile" a former dirt and gravel road, became one of the first experiments using concrete for the development of better road surface. The Lincoln Highway Association began a design effort for a road section that could handle traffic 20 years into the future.

In the early 1920's, national highway experts met and specified the following paved road conditions:

- A right-of-way 110 feet in width
- A concrete road bed 40 feet wide and 10 inches thick to support loads of 8,000 pounds per wheel
- Curves with a minimum radius of 1,000 feet banked for 35 mph with guard rails at embankments
- No grade crossings or advertising signs
- A footpath for pedestrians

Background image: "The First Seedling Mile in the Country at Malta, Illinois" (ca. 1914-1915). Digitized by the National Library of Medicine, University of Maryland System.

The First Seedling Mile in the Country

The road was only 10 feet wide at the time and was paved with concrete in October 1914. The Malta "Seedling Mile" a former dirt and gravel road, became one of the first experiments using concrete for the development of better road surface. The Lincoln Highway Association began a design effort for a road section that could handle traffic 20 years into the future.

- A right-of-way 110 feet in width
- A concrete road bed 40 feet wide and 10 inches thick to support loads of 8,000 pounds per wheel
- Curves with a minimum radius of 1,000 feet banked for 35 mph with guard rails at embankments
- No grade crossings or advertising signs
- A footpath for pedestrians

Background image: "The First Landing, 1482," by Giovanni di Matteo, 1482.
 Layout elements: "Bible Images Collection," "Special Collections," "Library," "University of South Florida, Tampa."



TAGHeuer
SWISS AVANT-GARDE SINCE 1860

Jeopardy!

Lincoln Highway 50

There are many Lincoln Highway
signs along the route.

How many do you drive or walk by?
(red top, blue bottom, blue lettering)

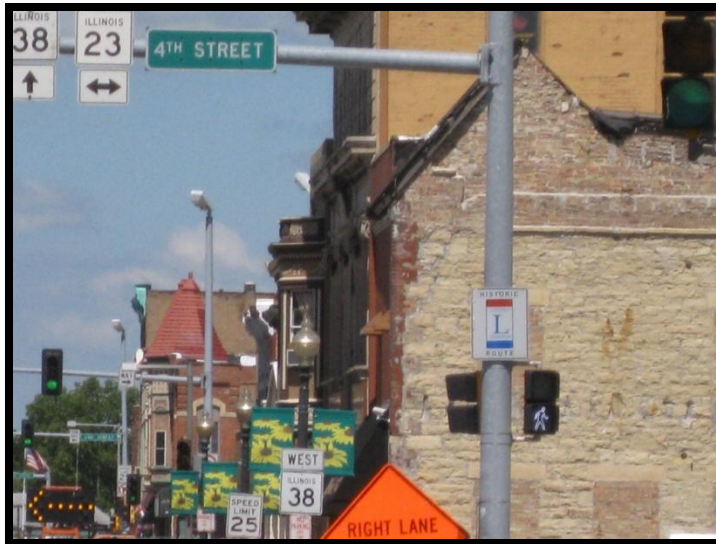
What are 22 (#1-4)



What are 22 (#5-10)



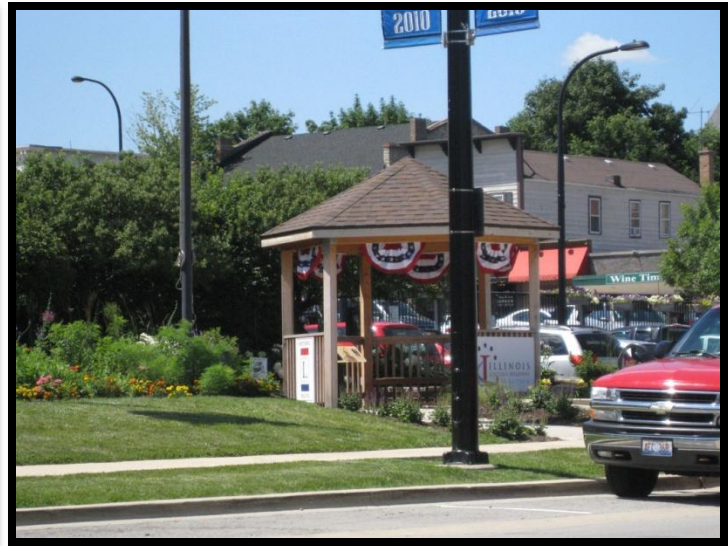
What are 22 (#11-14)



What are 22 (#15-19)



What are 22 (#20-22)





TAGHeuer
SWISS AVANT-GARDE SINCE 1860

Jeopardy!

Potpourri 10

Angels on Wheels can be
found here.

What is Bicycle Heaven.





TAGHeuer
SWISS AVANT-GARDE SINCE 1860

Jeopardy!

Potpourri 20

This is definitely a sweet way
to send your packages!

Where is Nestle Transportation.





TAGHeuer
SWISS AVANT-GARDE SINCE 1860

Jeopardy!

Potpourri 30

You will see many wind turbines
and windmills on the rally route.
How many are on Watson Road?

What are 3 windmills.





TAGHeuer
SWISS AVANT-GARDE SINCE 1860

Jeopardy!

Potpourri 40

Nine of these remain. The tenth was struck by lightning not once, but three times in the last 100 years. (It now resides on a pedestal in the East Garden of the Castle.)

What are gargoyles.





TAGHeuer
SWISS AVANT-GARDE SINCE 1860

Jeopardy!

Potpourri 50

There are three cemeteries on
this rally.

Name the oldest of the three.

What is Mound Rest (1855).

